

WARANTEC

Powered by Aidite



TrueFit Pro5

Edentulous Scan Body

Aidite

Aidite (Qinhuangdao) Technology Co.,Ltd.
Tel: +86-400-003-1233
Web: www.aidite.com
Email: info@aidite.com
VI-260210



Warantec



www.aidite.com



Facebook

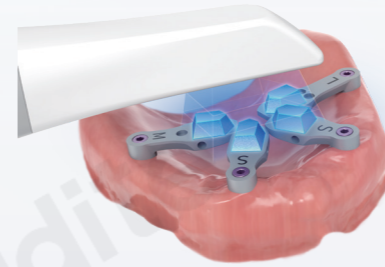
Everyone with a healthy and beautiful smile



TrueFit Pro5

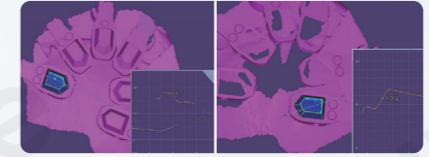
A More Precise and Efficient
Edentulous Implant Restoration System

Product superiority



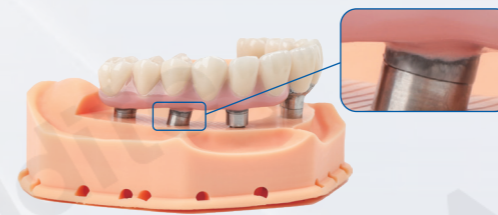
Small Scanning Area

The top pentagonal surface is flat and convex, with distinct feature markers for easy recognition



Low Matching Error

Adopting one - piece molding manufacturing process, the database matching error is less than 0.005mm



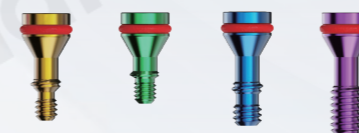
Accurate Restoration Effect

The interface error RMS value is approximately 0.02mm, ensuring passive fit between the restoration and the abutment.



Break Through Intraoral Scanner Brand Limitations

Sandblasted surface enhances imaging performance and improves scanning fluency.



Compatible with Mainstream Implant Systems

Only the positioning screw needs to be replaced, reducing investment costs.



Comprehensive Specifications & Models

Four lengths available (S/M/L/X), compatible with connectors to meet all implant spacing requirements.

Usage Process

Preparation before scanning

■ Cleaning before scanning

Fully aspirate saliva and clean blood before intraoral scanning, keep the scanning area dry, and avoid failure to image or bubble formation due to fluid reflection when exposed to direct light from the intraoral scanner.

■ Adjusting the light source

Move away the dental chair searchlight during intraoral scanning to avoid interference and error in imaging caused by its light source.

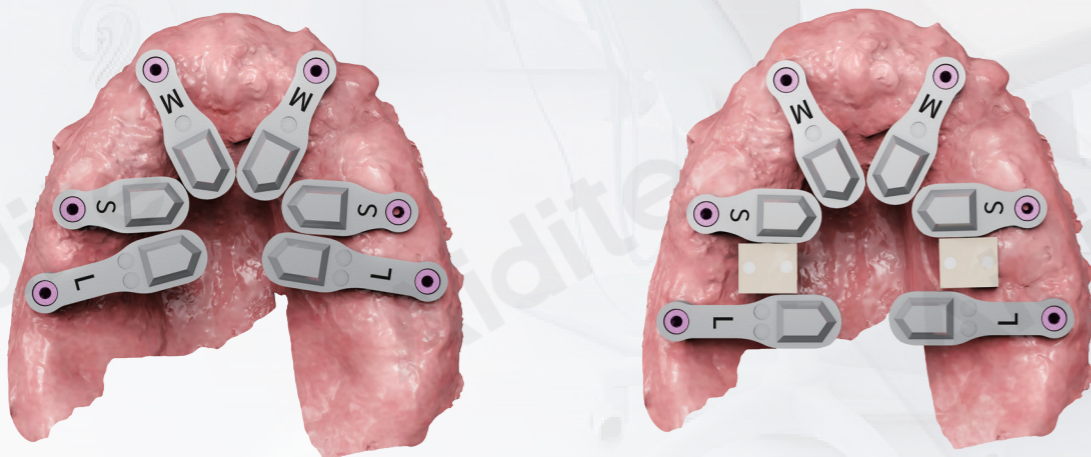
■ Preparation of scan body

Confirm the model of the scan body (connection type, transgingival height, material, feature area, etc.).

■ Comfort and communication

Make the patient relax, remind the patient to breathe through the nasal cavity, and avoid fogging on the lens of the intraoral scanner caused by oral breathing which affects the imaging accuracy.

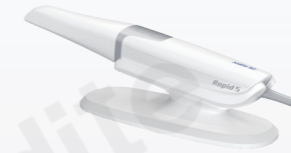
How to place them?



Place the scan bodies toward the center of the dental arch with front ends gathered.

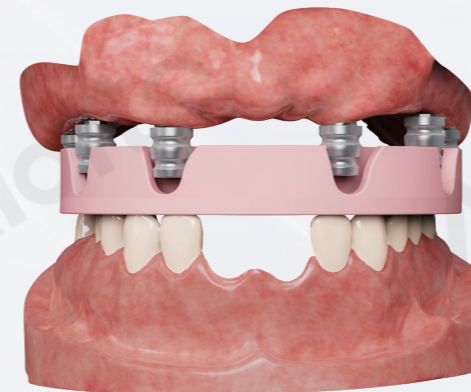
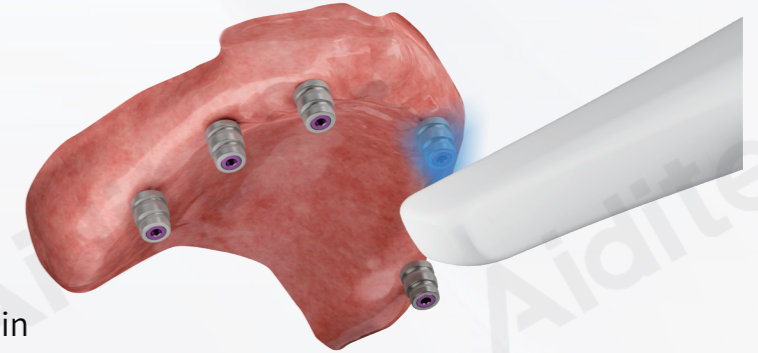
If adjacent implants are far apart, add a connector to link the two scan bodies.

Scanning Steps



Step 1:

Put on the scan cap and obtain the STL data of the gingival through intraoral scanning.



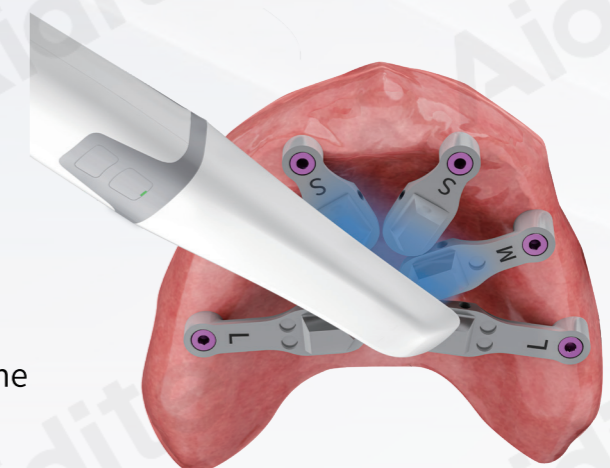
Step 2:

Confirm the occlusal relationship and obtain the occlusal data through intraoral scanning.



Step 3:

Put on the scan body and obtain the STL data of the scan body.



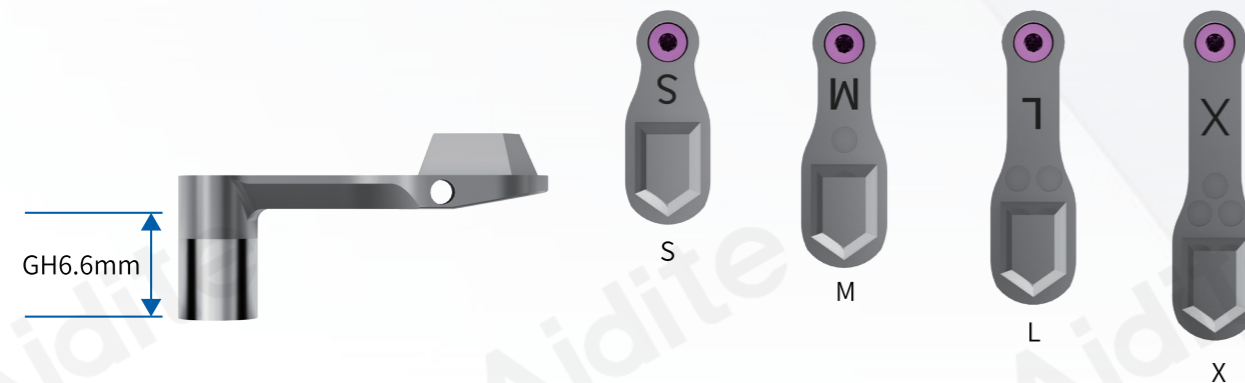
Scan body specifications

TrueFit Pro5 toolbox accessories list

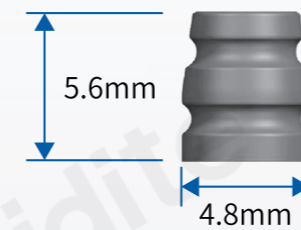
Configuration of the GH6.6 set		
Accessory name	Product number	Quantity
Scan Cap	04TF55648G	12
S-Type GH6.6 Scan Body	04TF56648S	3
M-Type GH6.6 Scan Body	04TF56648M	3
L-Type GH6.6 Scan Body	04TF56648L	3
X-Type GH6.6 Scan Body	04TF56648X	2
M1.4 Scan Body Screw	04TF5M14	11
M1.8 Scan Body Screw	04TF5M18	11
M2.0 Scan Body Screw	04TF5M20	11
M1.4 Scan Cap Screw	04TF5M14G	12
M1.8 Scan Cap Screw	04TF5M18G	12
M2.0 Scan Cap Screw	04TF5M20G	12
Screwdriver	HDI210S	1
Connector	TPCT	2

Identification of length and transgingival height

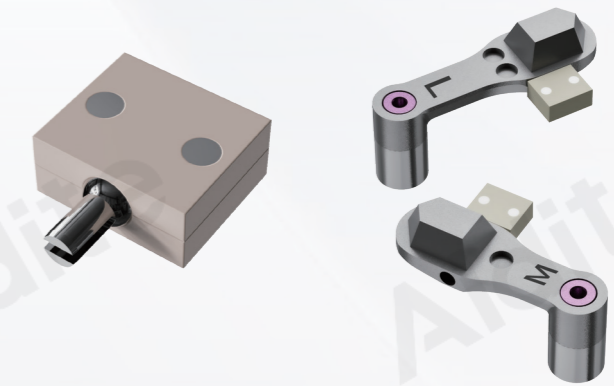
Distinguishing features			
Type	Model	Marking circle	Length
Short Type	S	None	16.3mm
Medium Type	M	1 Piece	19.3mm
Long Type	L	2 Pieces	22.3mm
Extra-Long Type	X	3 Pieces	25.0mm



Scan Cap



Connector



Implant systems compatible with scan bodies

*Central screws of different series are color-coded for specification identification to avoid mismatching.

